

# Daisy Shift

Yardage:  $\frac{7}{8}$  yard The fabric I used is from the *Remix* collection designed by Ann Kelle for Robert Kaufman (AAK-10393-77 Blueberry)

Notions: 6 – 1” buttons, 1½” piece of  $\frac{1}{8}$ ” wide elastic, 1 small button

**All seam allowances are  $\frac{1}{2}$ ”.** Pattern is in two sizes: **Size 2 or Size 4**

Wash, dry and press fabric. *Why prewash? See end of instructions.*

Tape together pattern pieces matching blue and green boxes. Cut out pattern.

Cut pattern pieces from fabric following cutting and placement instructions on pattern piece. Be sure to mark notches. ▲

Sew together neck and arm facings matching notch A to A, B to B, and C to C making sure right sides of the fabric are facing each other. The arm facings will be a circle.

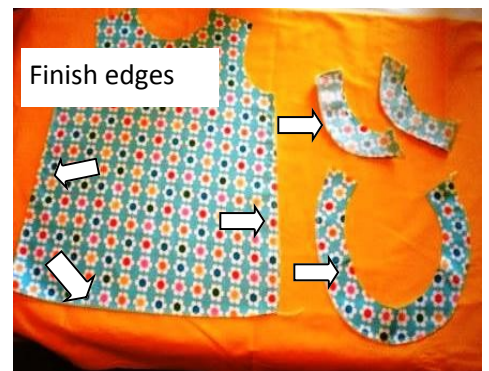
Using a serger or zigzag or overcast stitch on your sewing machine finish the sides, center back, and bottom edges of both the front and back pieces of shift and the longer outside curves of neck and arm facings.

With right sides of fabric together, match D notches together and E notches together. Sew together shoulder seams and side seams stopping at notches on side seams.

Pin neck facing to shift neckline, matching seams and notches F. Fold the piece of elastic in half so it creates a loop; tuck it into the top corner of the back, between the shift and the facing. Sew around neckline and down back to the end of the facing. Repeat for arm facings.

Clip curved seam allowance as shown in photo. Clipping curved seams allow them to lie flat when the facings are turned inside. Make sure you don't clip through the stitching.

Turn facing to the inside of shift and press.



I like to under stitch my facings to help keep them from peeking out. To under stitch, open the facings and seam allowance away from the body of the shift. Sew the facing to the seam allowance about 1/8" away from the seam. Do not sew through the front of shift. These stitches won't be seen from the outside. Under stitch both arm facings and neck facing. You won't be able to under stitch all the way into the corners of the neck facing, just go as far as you can. Press well.

Sew center back seam to dot. Press seam open. Press edges of the rest of the center back seam allowance under. Press under side hems 1/2" and hem 3/4". Sew down hems.

Sew on button on the opposite corner of back neck opening so that the elastic loop can slip over it. Sew on the side buttons.



Why wash fabric before sewing?

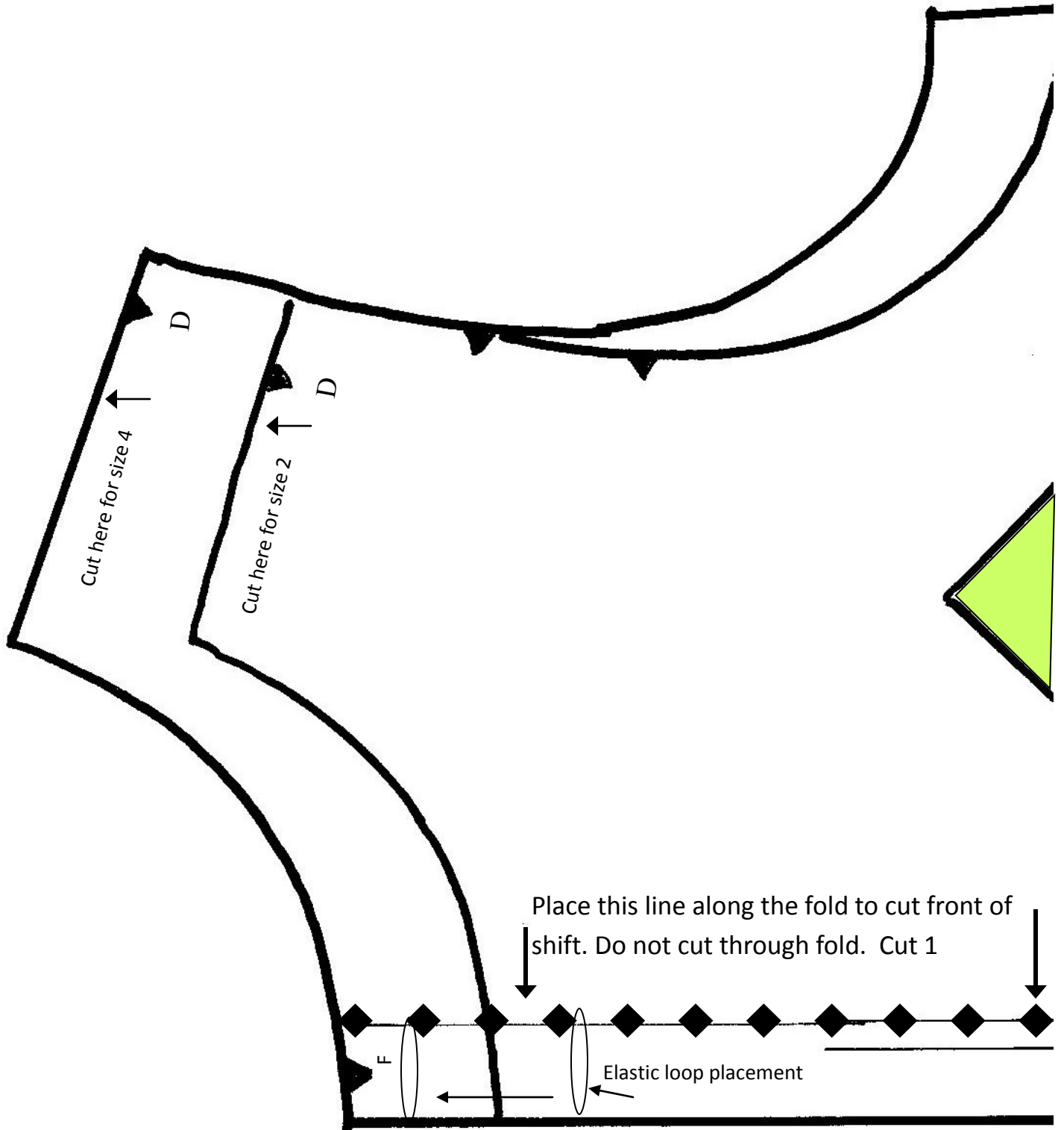
Many fabrics shrink when washed, some more than others. To be sure that your clothes still fit after they are washed, wash first. Pre-washing also removes excess dye and traces of chemicals that may be present.

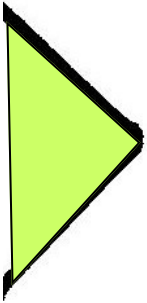
Copyright 2010 Christine Moyers

[www.bloomingstitches.blogspot.com](http://www.bloomingstitches.blogspot.com)

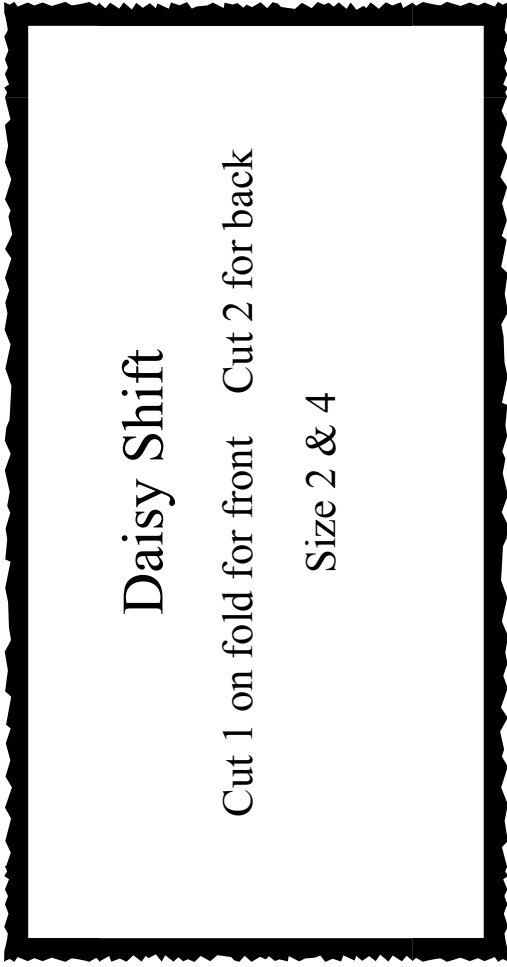
All rights reserved. For personal use only.

Match center diamonds A & B to align pattern pieces, then tape together.





Leave open from this notch up



# Daisy Shift

Cut 1 on fold for front Cut 2 for back

Size 2 & 4

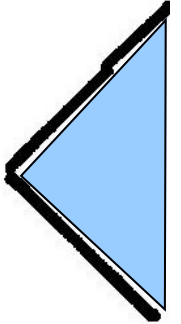
Leave side open from notch down.

E E

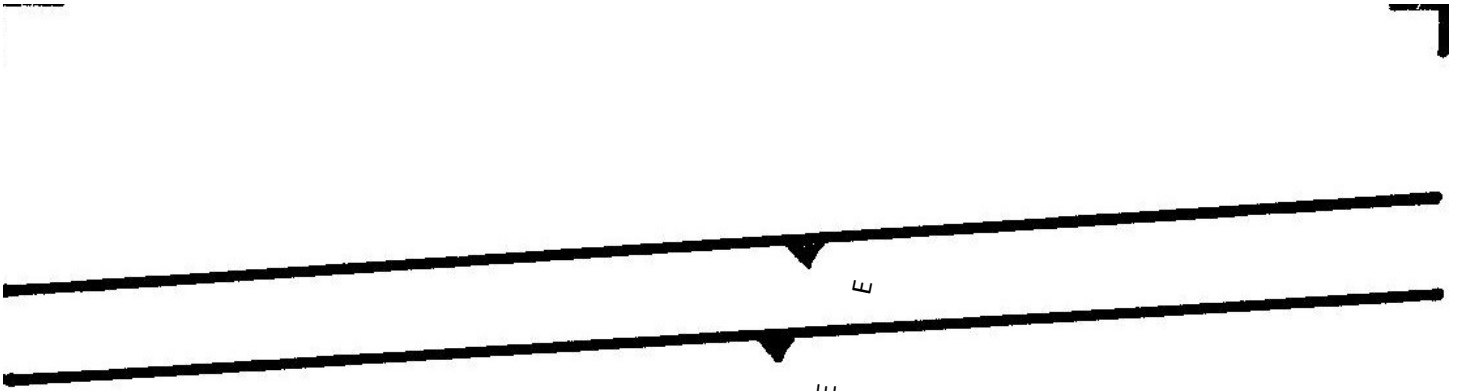
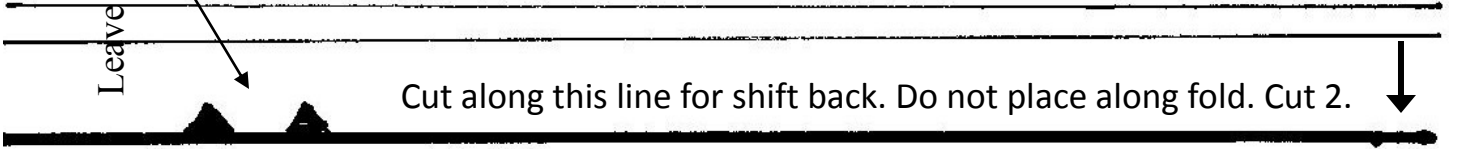
Copyright 2010 Christine Moyers

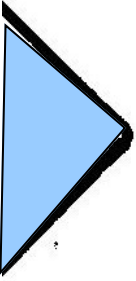
[www.bloomingsitches.blogspot.com](http://www.bloomingsitches.blogspot.com)

All rights reserved. For personal use only.

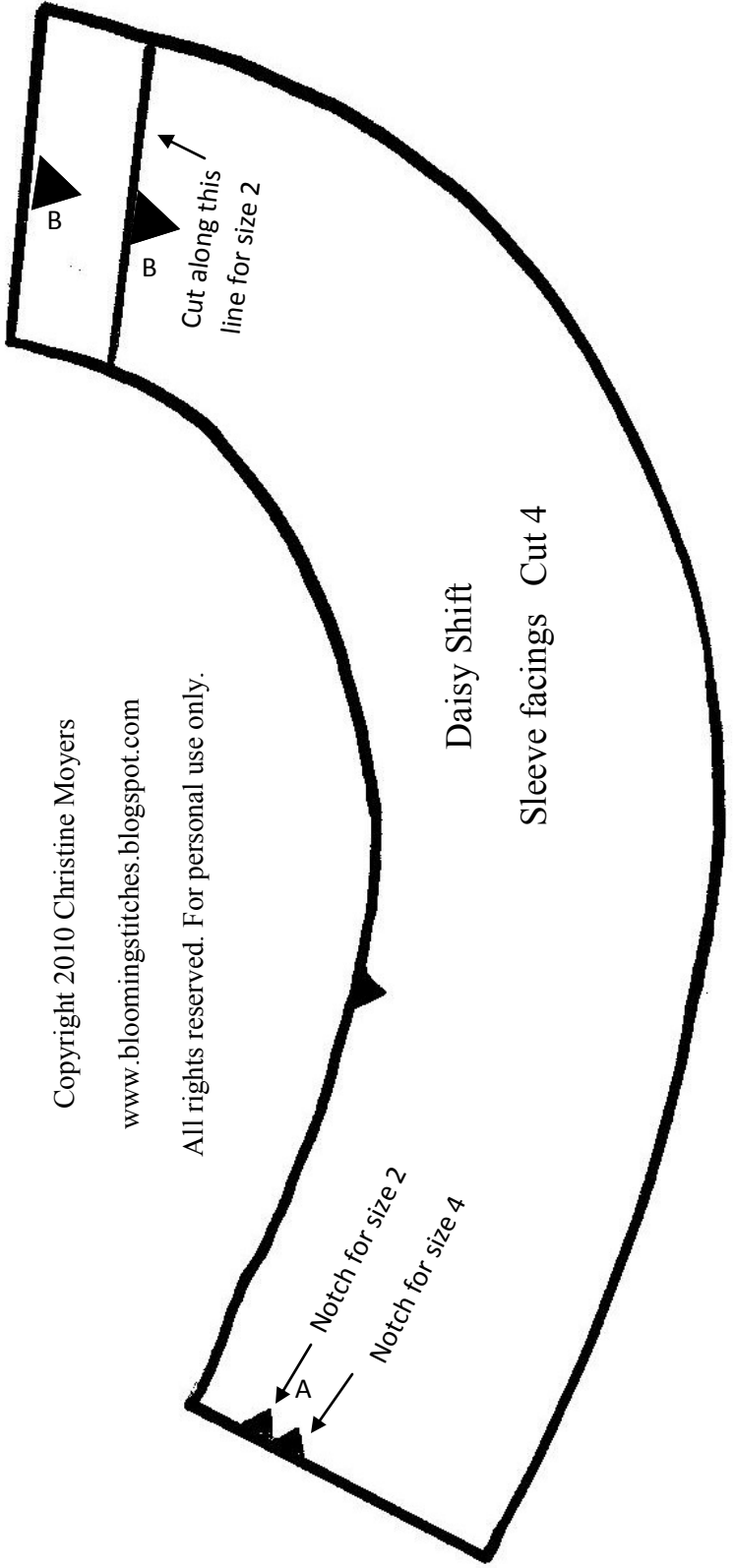


Cut along this line for shift back. Do not place along fold. Cut 2.





3/4" hem



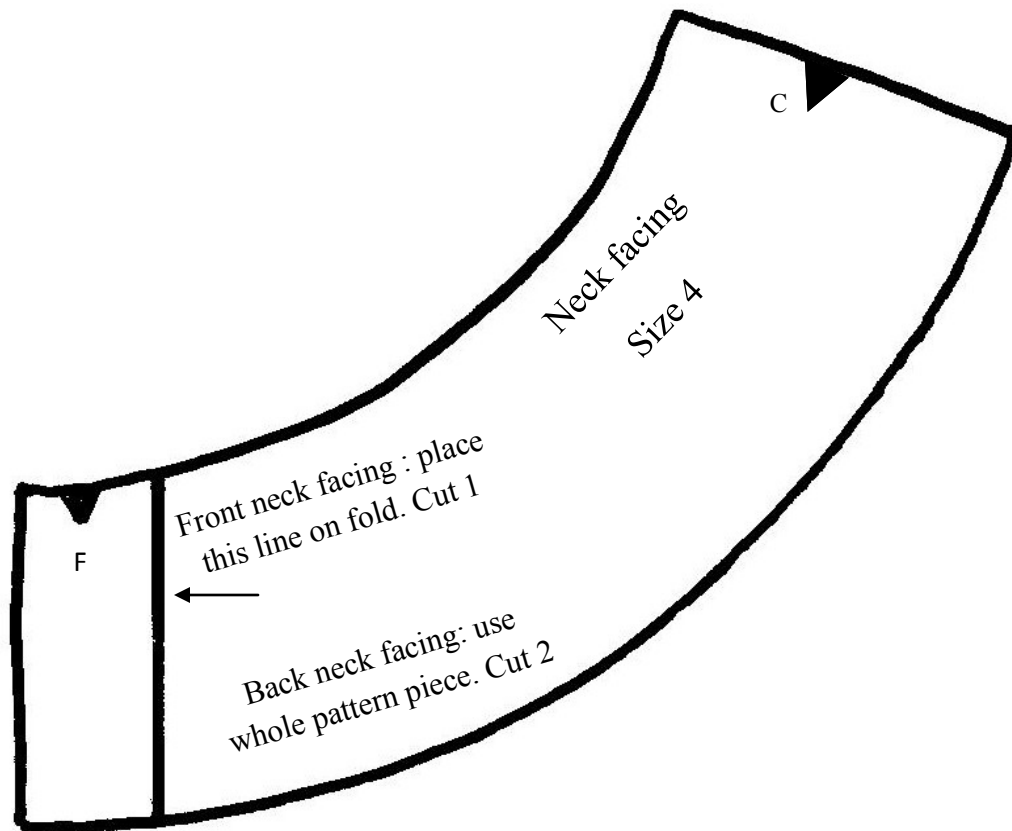
Copyright 2010 Christine Moyers

[www.bloomingstitches.blogspot.com](http://www.bloomingstitches.blogspot.com)

All rights reserved. For personal use only.

Daisy Shift

Sleeve facings Cut 4



Copyright 2010 Christine Moyers  
[www.bloomingstitches.blogspot.com](http://www.bloomingstitches.blogspot.com)  
All rights reserved. For personal use only.

