

"ANN KELLE" BABY BOOTIES

FINISHED SIZES::

0-3 months	sole = 4.00"
3-6 months	sole = 4.25"
6-9 months	sole = 4.50"
9-12 months	sole = 4.75"

SUPPLIES/MATERIAL LIST::

- 1/4 YD (or FQ) outer bootie/sole fabric
- 1/4 YD (or FQ) lining bootie/sole fabric
- (2) pieces of iron-on interfacing cut to 1.5" x 3"
- 1 YD 1/4 - 3/8" ribbon
- coordinating thread

Pattern:

Print and cut pattern pages

Cutting Instructions:

Cut (4) outer bootie pattern pieces, making sure to cut (2) with the toe facing right and (2) with the toe facing left to create (2) pairs of opposites.

Repeat with lining bootie fabric using the same pattern piece.

Cut (4) sole pieces, (2) from the outer fabric and (2) from the inner fabric OR for a contrast look (as shown) cut all (4) sole pieces from the lining fabric.

Interface Bootie Linings:

Interface (2) opposite bootie lining pieces. Iron piece of interfacing to wrong side of bootie lining, centering the 3" edge along the top of the lining piece. (see Figure 1)

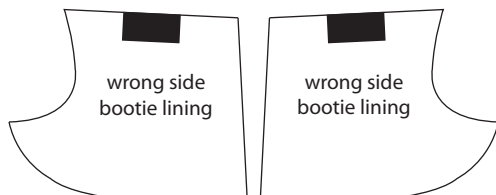


Figure 1

Sew Button Holes on Bootie Linings:

Mark button hole placement from pattern piece onto (2) interfaced lining pieces. Using your machine's button hole setting, sew 1/2" long button holes on

the right side of interfaced lining pieces. Cut open button holes.

Sew Outer Bootie to Bootie Lining:

** All seams are 1/4" unless otherwise indicated. **

For each bootie, you will need (2) pairs of opposite outer bootie pieces and lining bootie pieces. You should only have (1) button hole lining per bootie.

With right sides together, match (1) outer bootie piece with (1) lining bootie piece and pin along top edge. Repeat with opposite outer/lining bootie pieces.

Repeat above for second bootie.

Sew along the top edge of each of the (4) sets of pairs. Making sure to back stitch at the beginning and end of each seam. Press seams open.

With right sides together, match (2) of the outer/lining bootie pairs and pin along the long straight edge as well as the long curved edge, making sure to match the seam you just stitched.

Repeat above for remaining (2) pairs.

Sew along pinned edges (of both sets) making sure to back stitch at the beginning and end of each seam. Press open seams. (see Figure 2)

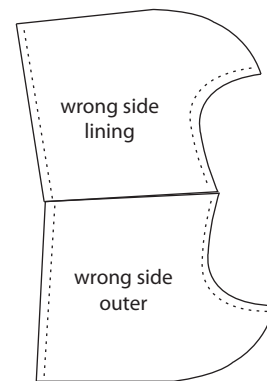


Figure 2

Sew Outer Bootie to Outer Sole:

Fold outer soles in half lengthwise and press to mark center seam.

With right sides together, line up outer bootie center toe seam with outer bootie center toe sole mark and pin. Do the same with the outer bootie center heel seam and the outer bootie center heel sole mark.

Repeat above for second bootie.

This next part takes PATIENCE and some slow stitching. I recommend setting your machine to the needle down position if that is an option.

Starting at the center toe seam slowly begin to stitch the bootie to the sole, taking time to adjust and match up your raw edges. (*You could pin around the sole if you're more comfortable however I found that due to the very small size, it was easier to manipulate with my fingers as I went, stitching a few stitches and then readjusting.*) Continue around the entire perimeter of the sole making sure to back stitch at the beginning and end.

Repeat above for second bootie.

In the same fashion, you will sew the bootie lining to the bootie lining sole, matching and pinning at the center seams. The **DIFFERENCE** is that you will need to leave a 2" opening on one of the sides of the sole to turn your bootie right side out.

Repeat above for second bootie.

Trim bootie soles seam allowance (both outer and lining) to 1/8".

Turn and finish Lining Sole seam:

Using the un-sewn opening in the bootie lining sole, turn bootie right side out and gently press out along the sole seams with your finger.

Edge stitch or hand stitch the un-sewn opening in the bootie lining sole closed.

Push bootie lining into bootie outer matching up seams to get a nice clean fit.

Turn bootie lining down approximately 3/4" - 1" depending upon the bootie size to create a cuff. The button holes should now be exposed.

Cut ribbon in half. Attach a safety pin to one end of the ribbon and thread through one button hole around the cuff and exiting out the other button hole. Pull ribbon ends so that they are the same length.

Make sure the bootie cuff back seam is lined up with the bootie back seam. Starting at the top of the cuff, stitch (lengthen your stitch to around 3) in the ditch of the seam. You will be stitching the folded cuff to the bootie and also securing the ribbon so that it can't be pulled out.

That's (almost) it!

Slip those booties on some cute baby feet, cinch up the cuff using the ribbon for a custom fit and pat yourself on the back!!

Fabrics Used (on pattern samples)::

Remix Flannel, Ann Kelle (Robert Kaufman)::

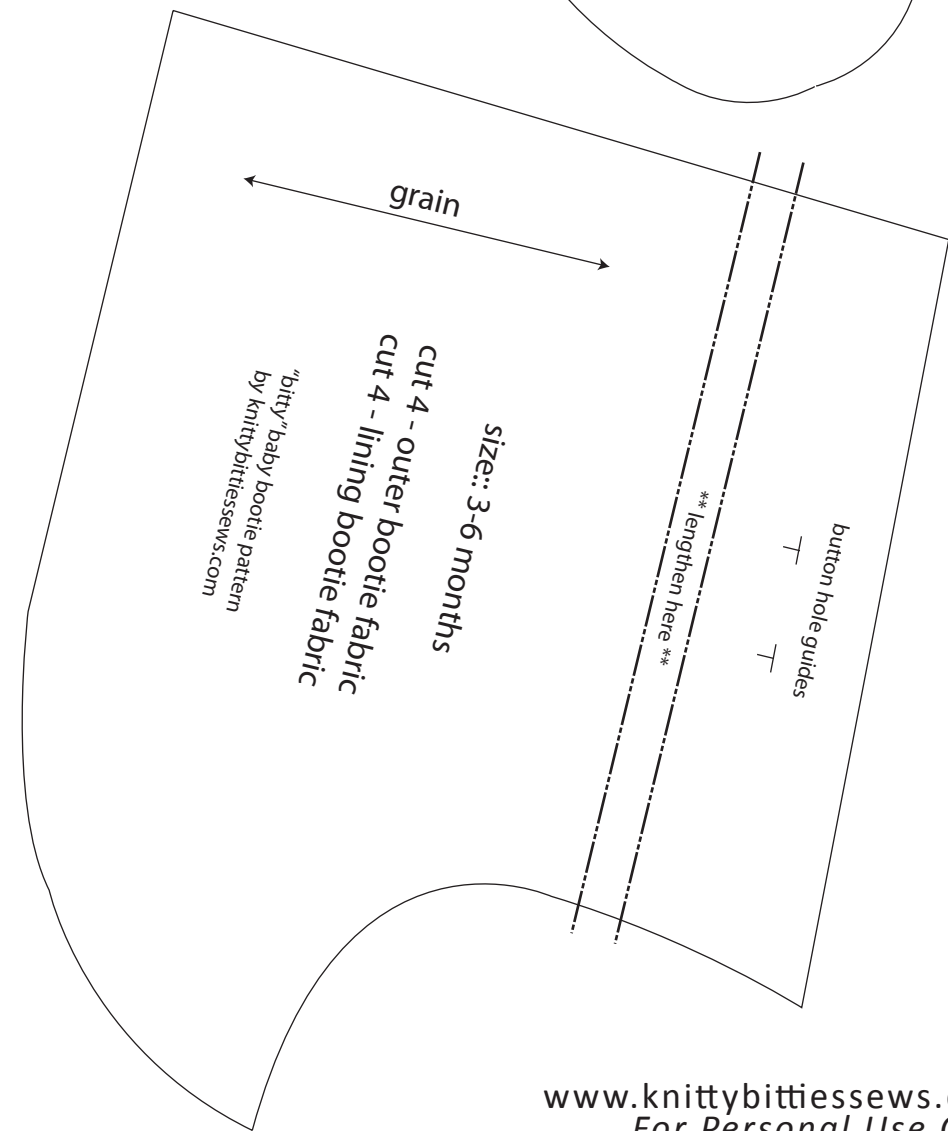
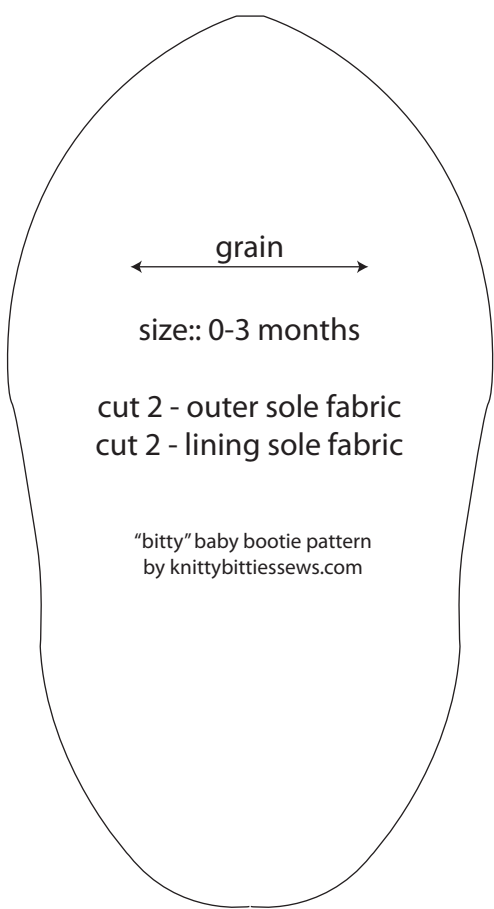
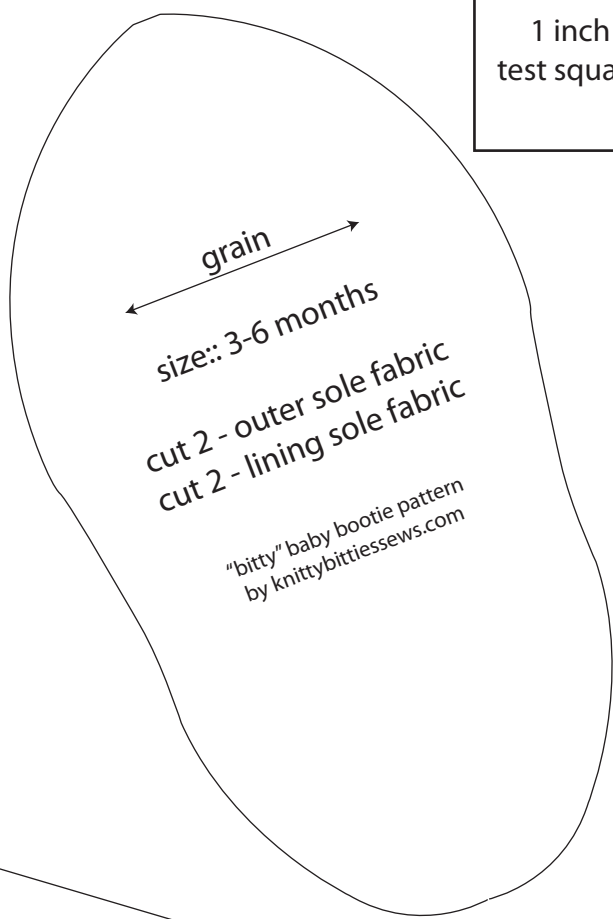
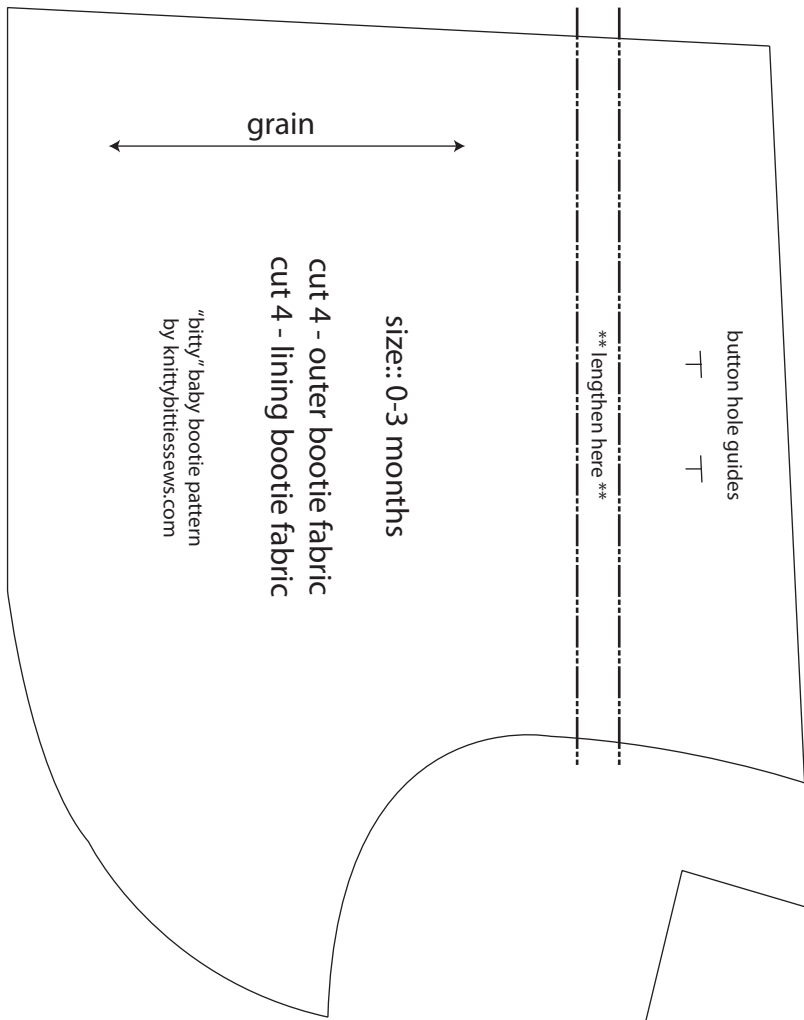
Remix Flannel Chevrons Yellow / Remix Chevrons Pepper
Remix Flannel Dots Hot Pink

Flannel, Solids (Robert Kaufman):: Aqua / Hot Pink / Yellow

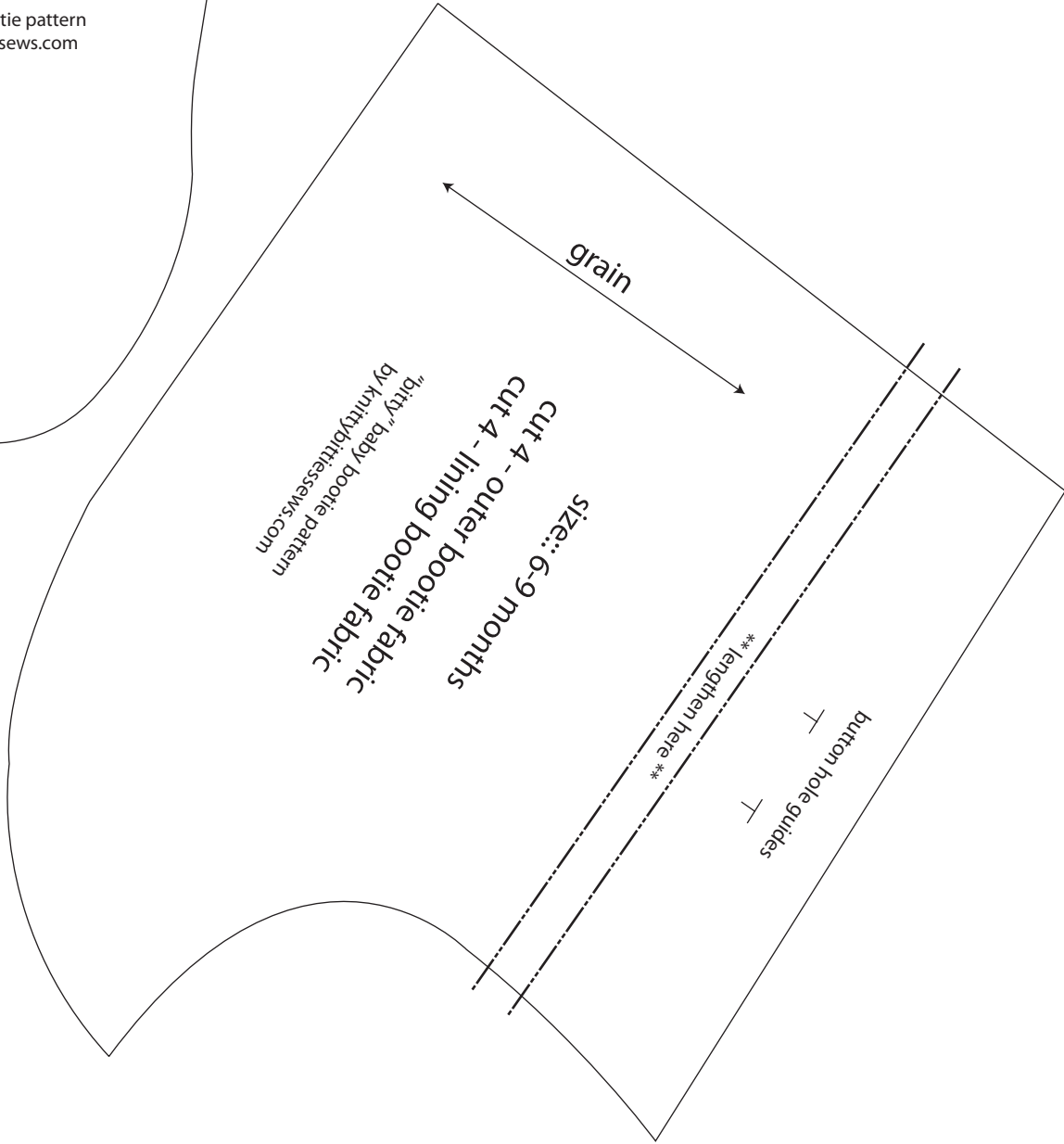
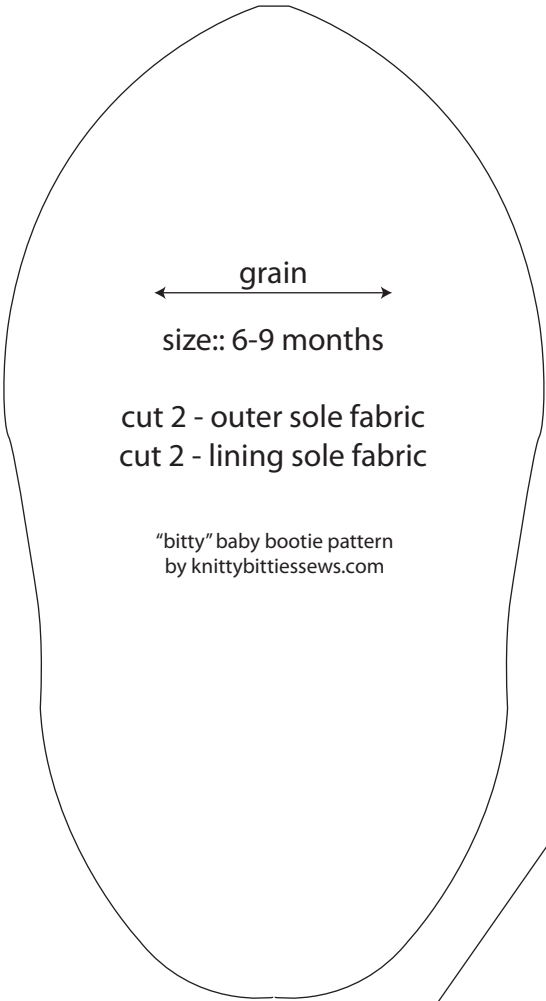
***** For a visual tutorial to accompany this pattern, please visit:
www.knittybittiessews.com/tutorials *****

PLEASE DO NOT COPY OR DISTRIBUTE WITHOUT PRIOR WRITTEN CONSENT.

1 inch
test square



1 inch
test square



1 inch
test square

